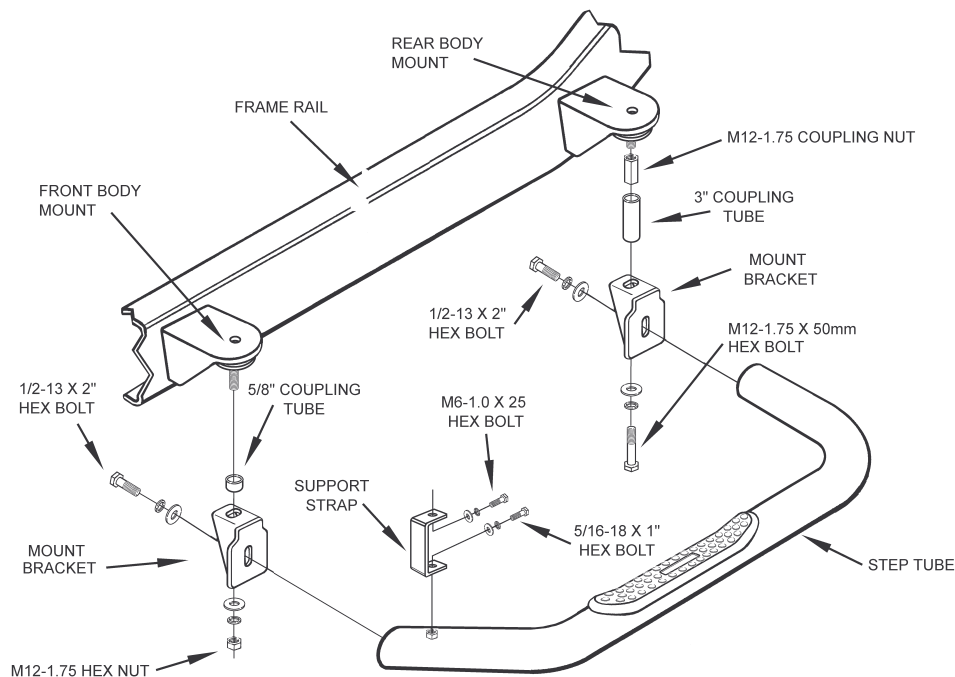


Installation Instructions

CONTENTS:	(2) Step Tubes	(4) Mount brackets
	(2) Support straps	(2) 5/8" long front coupling tubes
	(2) 3" long rear coupling tubes	(2) M12-1.75 x 50 coupling nuts
	(2) M12-1.75 x 40mm hex bolts	(2) M12-1.75 hex nuts
	(4) 1/2-13 x 2" hex bolts	(8) 1/2" flat washers
	(8) 1/2" lock washers	(2) M6-1.0 x 25mm hex bolts
	(2) 5/16-18 x 1" hex bolts	(4) 5/16" flat washers
	(4) 5/16" lock washers	(1) Extension spring

1. Thread an M12-1.75 x 50mm coupling nut onto the end of the bolt that protrudes out of the rear body mount. Hold the factory nut and torque the coupling nut to 45 ft lbs.
2. Install the supplied M12-1.75 x 40mm bolt through a lock washer, flat washer, mount bracket, 3" coupling tube, and into the coupling nut on the rear body mount. Snug the bolt, but do not tighten at this time.
3. Slip the 5/8" long coupling tube, mount bracket, 1/2" flat washer and 1/2" lock washer onto the protruding stud at the front body mount, and secure with a M12-1.75 hex nut. Snug the nut, but do not tighten at this time.
4. Bolt the tube to the brackets with two 1/2-13 x 2" hex bolts, lock washers and flat washers. Snugly tighten the bolts, then check the alignment of the tube against the rocker panel. Make any necessary adjustments, then tighten M12 fasteners to 45 ft lbs. and 1/2-13bolts to 50 ft lbs.
5. Attach the support strap to the top of the tube with a 5/16-18 x 1" hex bolt, lock washer, and flat washer. Bolt the other side of the strap to the existing front mud flap mount with the M6-1.0 x 25mm hex bolt, 5/16" lock washer and 5/16" flat washer provided.
6. To prevent the parking brake cable from striking against the left tube, clip the supplied extension spring through the hole in the bottom of the cab nearest the rear mounting bracket, then attach the other end to the brake cable.
7. Repeat steps 1-5 on opposite side of the vehicle.



7061 93-97 Ford Ranger Extended Cab Pickup